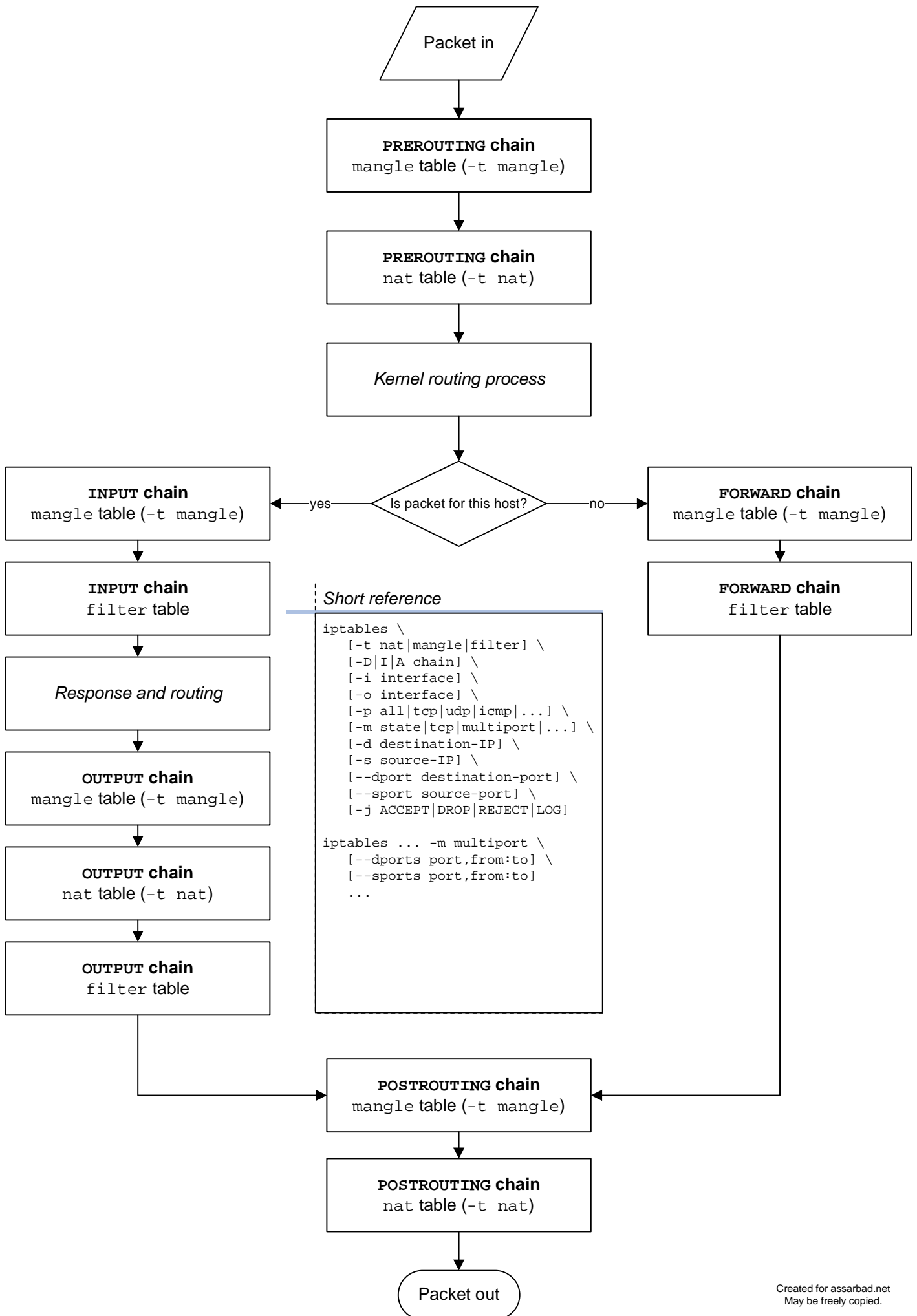


iptables packet processing



Short reference

```

iptables \
[-t nat|mangle|filter] \
[-D|I|A chain] \
[-i interface] \
[-o interface] \
[-p all|tcp|udp|icmp|...] \
[-m state|tcp|multiport|...] \
[-d destination-IP] \
[-s source-IP] \
[--dport destination-port] \
[--sport source-port] \
[-j ACCEPT|DROP|REJECT|LOG]

iptables ... -m multiport \
[--dports port,from:to] \
[--sports port,from:to]
...
  
```